

## MANUAL – 1

### **PARTICULARS OF NATIONAL INSTITUTE OF SECONDARY STEEL TECHNOLOGY (NISST), FUNCTIONS AND DUTIES**

#### **BACKGROUND**

The need for Human Resource Development and Technology Upgradation in the secondary steel sector comprising mainly the steel melting units with EAF or IF, and the Re-rolling units has been felt since long. A similar opinion was expressed by the Advisory Committee on Steel Rolling Industries, set up by Ministry of Steel, Government of India in 1984. It was primarily based on these needs and also the demand from the industry, that the National Institute of Secondary Steel Technology was set up as a registered society on 18<sup>th</sup> August, 1987 under the Chairman of Development Commissioner for Iron & Steel.

The following areas of secondary steel sector are under the purview of the Institute:

- Electric Arc and Induction Furnace
- Ladle Refining
- Rolling Mills (Hot & Cold)
- Direct Reduced Iron units

#### **OUR VISION**

“NISST will be the premier institute in the country channelising state of art knowledge and expertise catering to the various needs of the industries of secondary steel sector and helping the country to achieve the desired fast and healthy growth of this core industrial sector, resulting in big economic, environmental and societal gains in the long run of the country.”

#### **AIMS AND OBJECTIVES**

- ❖ To provide trained technical manpower to the secondary steel sector through short-term and long-term courses and to update their knowledge base.
- ❖ To bring awareness about the State of Art Technology by holding Seminars, Workshops, Symposia etc.
- ❖ To provide various industrial services and testing facilities.
- ❖ To extend consultancy services to industries in term of solving technological problems, improving efficiency and reducing pollution levels.
- ❖ To conduct research, Development and Design work in frontier areas for providing update technology to this sector.
- ❖ To organize for documentation and information retrieval services to the industry.
- ❖ To provide the platform for interaction between industry and educational as well as research institutions....

## MANAGEMENT

The Institute is managed by a Board of Governors consisting of members from Industry, Educational, Institutions, Industrial Associations & Ministry of steel under the Chairmanship of Development Commissioner for Iron & Steel. The Director looks after day to day activities of the Institute. Besides, there is a local Advisory Committee consisting of eminent personalities from industry, Government, Associations, Educational Institutions to help the Director for growth of the Institute

## CAMPUS

The Institute has its own campus constructed on six acres of land located on G.T. Road, (National Highway No.1), Mandi Gobindgarh (Punjab) having a covered area of 7000 sq.mtrs. which consists of Administrative Block, Technical Block having different laboratories/lecture halls, hostel and residential block. It has two Regional Centres located at Nagpur and Kolkata.

## MAIN OFFICE

POST BOX NO.92, G.T. ROAD,MANDI GOBINDGARH-147 301, DISTT. FATEHGARH SAHIB,  
PUNJAB  
TEL: 01765-258080, 259532, 256132, 252558, 259367, 250574  
FAX: 01765-258079  
E-MAIL : [info@nisst.org](mailto:info@nisst.org) WEBSITE : [www.nisst.org](http://www.nisst.org)

## REGIONAL CENTRES OF NISST

### NAGPUR

MHADA COMPLEX, FIRST FLOOR, AMRAVATI ROAD, NAGPUR-440 010  
TEL: 0712-2550685 FAX: 0712-2527488  
E-MAIL : [nisst\\_ngp@rediffmail.com](mailto:nisst_ngp@rediffmail.com)

### KOLKATA

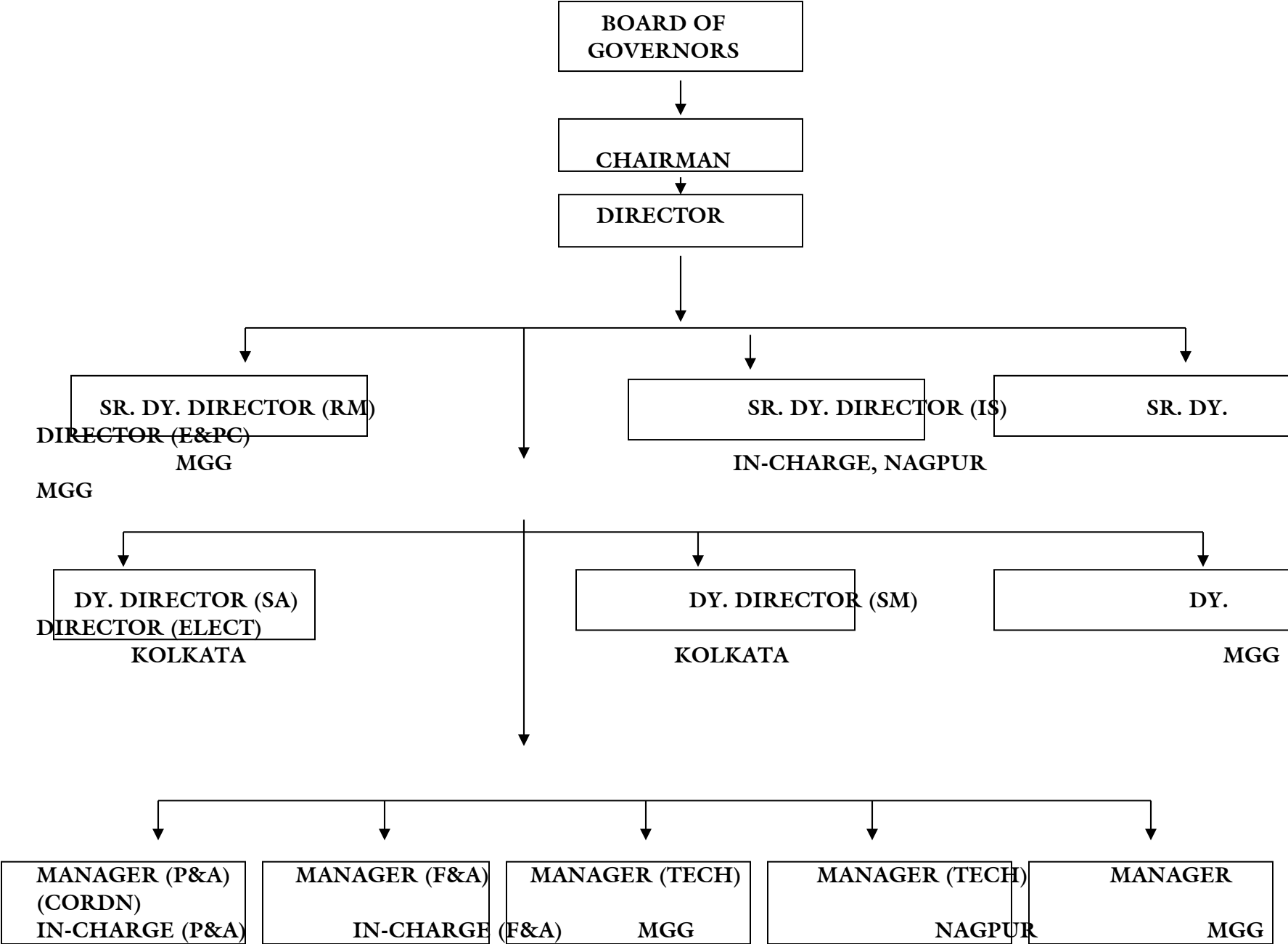
A-34, BENGAL ENGG. & SCIENCE UNIVERSITY CAMPUS, SHIBPUR, HOWRAH 711103.  
TEL: 033-26685303

**As on 01.05.2012 total employee strength of NISST is 31 comprising of 12 executives and 19 non-executives excluding one Resident Manager (South) who is engaged on contractual basis.**

## RESIDENT MISSIONS MANAGED BY NISST

- |                     |   |                            |
|---------------------|---|----------------------------|
| 1. MANDI GOBINDGARH | - | Resident Mission (North-1) |
| 2. KOLKATA          | - | Resident Mission (East)    |
| 3. NAGPUR           | - | Resident Mission (Central) |
| 4. CHENNAI          | - | Resident Mission (South)   |

# ORGANISATION CHART (Existing Manpower)



MGG

MGG